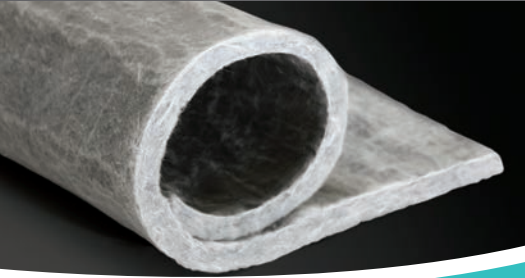




Dow Corning® HPI-1000 Building Insulation Blanket

Significantly improve thermal performance in space-limited applications

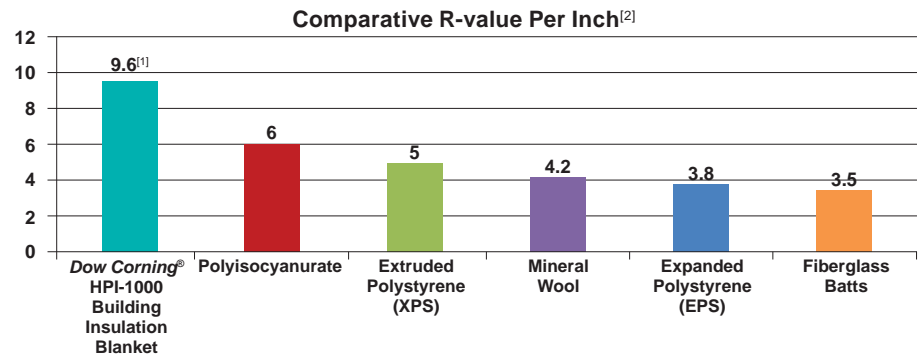


Features/Benefits

- Superior thermal performance
- R 3.8 per 0.4 inch (10 mm) as supplied; R 9.6 per inch (25.4 mm)^[1]
- Thin profile
- Flexible
- Reduces thermal bridging
- Easy to install in difficult profiles such as curves and corners
- Fast installation with simple tools
- Fire-resistant
- High water-vapor permeability
- Hydrophobic
- Enables new designs to meet more-stringent thermal requirements
- Simplifies bulky or complicated insulation details

Dow Corning® HPI-1000 Building Insulation Blanket is a thin insulation product with a superior thermal resistance value (R 9.6/inch^[1]) compared to conventional insulation. Its thin profile, superb flexibility and compression resistance allow for thermal protection in hard-to-insulate spaces. It can be easily cut and conformed to complex shapes and tight curvatures and adhered without difficulty to building products.

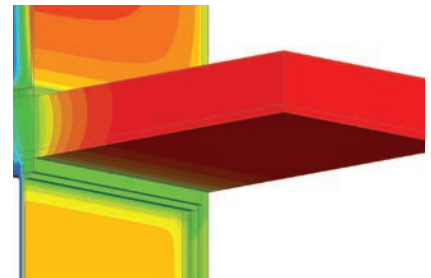
Superior Thermal Performance



Increase Design Options for Hard-to-Insulate Spaces and Thinner Profiles

The blanket is an ideal solution for insulating challenging transition conditions in building envelopes, such as:

- Where below-grade systems meet above-grade wall systems
- Where glazing systems meet wall systems
- Where design results in exposed or underinsulated slab edges
- Where additional thermal insulation is required at curtainwall mullions (mullion wrap)
- Parapet applications



Reduces thermal bridging.

Easy Application

Dow Corning HPI-1000 Building Insulation Blanket can be easily cut and adhered to substrates in a wide range of applications.



^[1] Average R-values per ASTM C518 at 100°F and 2 psi compression, shown in hr-ft²-F/BTU; USI-values shown in W/m²K.

^[2] Thermal conductivity varies by specific grade of insulation for any given material family. Values shown represent typical values and are only provided for general comparison of families.



Dow Corning® HPI-1000 Building Insulation Blanket can be used in a variety of applications.

Typical Properties

Specification Writers: These values are not intended for use in preparing specifications. Please contact your local Dow Corning sales representative or your Global Dow Corning Connection before writing specifications on this product.

Property	Value
Color	Gray
Thickness	0.4 inch (10 mm)
Thermal Conductivity – Average (ASTM C518 at 100°F and 2 psi compression)	0.00867 BTU/(hr·ft·°F) (0.015 W/mK)
R-value/inch – Average (ASTM C518 at 100°F and 2 psi compression)	
0.4 inch (10 mm) thickness	3.8 (hr·ft²·F)/(Btu·in)
1 inch (25.4 mm) thickness	9.6 (hr·ft²·F)/(Btu·in)
U-Value – Average (ASTM C518 at 100°F and 2 psi compression)	
0.4 inch (10 mm) thickness	1.49 W/m²·K
1 inch (25.4 mm) thickness	0.59 W/m²·K
Unit Weight Per 0.4 inch (10 mm) Thickness	0.33 lb/ft² (1.55 kg/m²)
Compressive Strength (ASTM C165)	
@ 10% strain	8 psi (55 kPa)
@ 25% strain	30.5 psi (210 kPa)
Fire Resistance (ASTM E84)	Class A, FSI 5, SDI 5
Water Retention (ASTM C1511 [modified]), by volume	<8%
Permeability (ASTM E96)	33 U.S. perms (1,877 ng/Pa·m²·s) – Dry Cup

Packaging

Dow Corning HPI-1000 Building Insulation Blanket is available in a 0.4 in (10 mm) thickness. The material is available in a large (~750 sq ft) roll measuring 58 ±2 in x ~150 ft (1,473 ±50 mm x ~45.7 m).

It also is available in smaller 50 ft (15.2 m) rolls in widths from 1 to 12 in (25.4 to 304.8 mm) in 1 in (25.4 mm) increments.



Images: Page 1 – AV21588, AV21735; Page 2 – AV23444, AV23633, AV23642, AV23486

HANDLING PRECAUTIONS

PRODUCT SAFETY INFORMATION REQUIRED FOR SAFE USE IS NOT INCLUDED IN THIS DOCUMENT. BEFORE HANDLING, READ PRODUCT AND SAFETY DATA SHEETS AND CONTAINER LABELS FOR SAFE USE, PHYSICAL AND HEALTH HAZARD INFORMATION. THE SAFETY DATA SHEET IS AVAILABLE ON THE DOW CORNING WEBSITE AT DOWCORNING.COM, OR FROM YOUR DOW CORNING SALES APPLICATION ENGINEER, OR DISTRIBUTOR, OR BY CALLING DOW CORNING CUSTOMER SERVICE.

LIMITED WARRANTY INFORMATION – PLEASE READ CAREFULLY

The thermal properties of Dow Corning® HPI-1000 Building Insulation Blanket are based on actual testing and best engineering practices and estimates. Dow Corning makes no representation, warranty or guarantee regarding the thermal performance of any particular system or application in which Dow Corning HPI-1000 Building Insulation Blanket may be incorporated; results may vary.

The information contained herein is offered in good faith and is believed to be accurate. However, because conditions and methods of use of our products are beyond our control, this information should not be used in substitution for customer's tests to ensure that our products are safe, effective and fully satisfactory for the intended end use. Suggestions of use shall not be taken as inducements to infringe any patent.

Dow Corning's sole warranty is that our products will meet the sales specifications in effect at the time of shipment.

Your exclusive remedy for breach of such warranty is limited to refund of purchase price or replacement of any product shown to be other than as warranted.

TO THE FULLEST EXTENT PERMITTED BY APPLICABLE LAW, DOW CORNING SPECIFICALLY DISCLAIMS ANY OTHER EXPRESS OR IMPLIED WARRANTY OF FITNESS FOR A PARTICULAR PURPOSE OR MERCHANTABILITY.

DOW CORNING DISCLAIMS LIABILITY FOR ANY INCIDENTAL OR CONSEQUENTIAL DAMAGES.

Dow is a registered trademark of The Dow Chemical Company.

Dow Corning is a registered trademark of Dow Corning Corporation. The Corning portion of the Dow Corning trademark is a trademark of Corning Incorporated, used under license.

©2014, 2015, 2016 Dow Corning Corporation, a wholly owned subsidiary of The Dow Chemical Company. All rights reserved.

AGP14675

Form No. 62-1728D-01



DOW CORNING